

JOHNSONS & PARTNERS

Estate and Letting Agency



30 BESECAR AVENUE

, NG4 4DL

£265,000



30 BESECAR AVENUE

, NG4 4DL

A beautifully presented, three bedroom semi detached which has been improved by the current owners and includes a re-fitted family/dining open plan with the kitchen and having doors out to the rear garden. The property is perfectly located having easy access to a wide range of 'family friendly' amenities including schools for children of all ages, regular public transport services, shops and recreational facilities.

In brief, the double glazed and centrally heated accommodation comprises, reception hallway, WC, lounge open plan dining kitchen, first floor landing, three bedrooms and a modern, family bathroom. To the outside is a low maintenance front garden, driveway and at the rear is a lovely garden with views.

Internal viewing is most strongly recommended, in order to full appreciate all of the positive attributes of this lovely home. Contact us now to book your personal viewing appointment.

Entrance Hallway

Living Room

13'7" x 11'2" (4.15 x 3.41)

Dining Kitchen

17'4" x 13'11" (5.30 x 4.25)

WC

First Floor Landing

Bedroom One

14'0" x 11'4" (4.28 x 3.46)





Bedroom Two
12'1" x 9'8" (3.70 x 2.95)

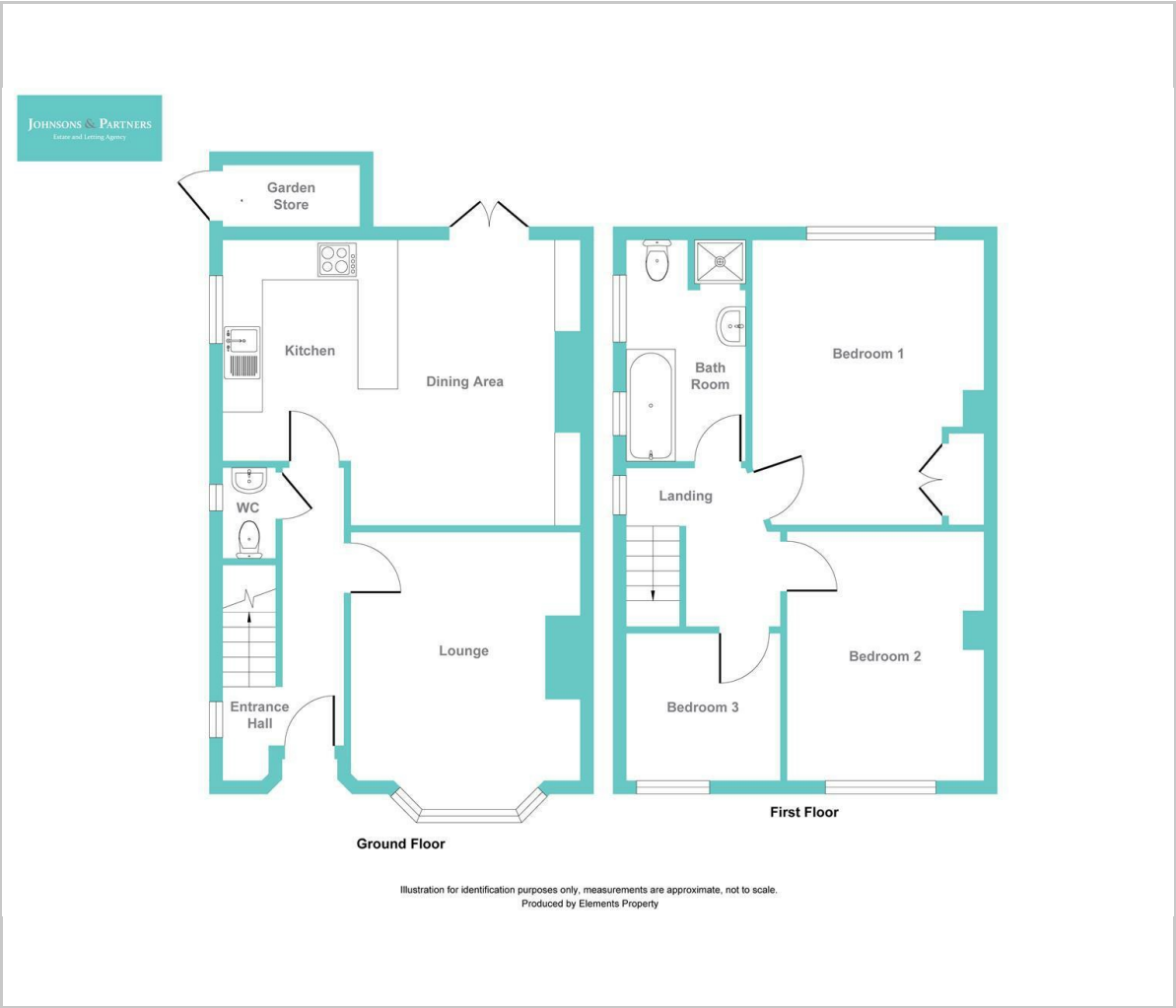
Bedroom Three
7'2" x 7'2" (2.20 x 2.20)

Family Bathroom
10'7" x 5'6" (3.25 x 1.70)

Agents Disclaimer



Floor Plan

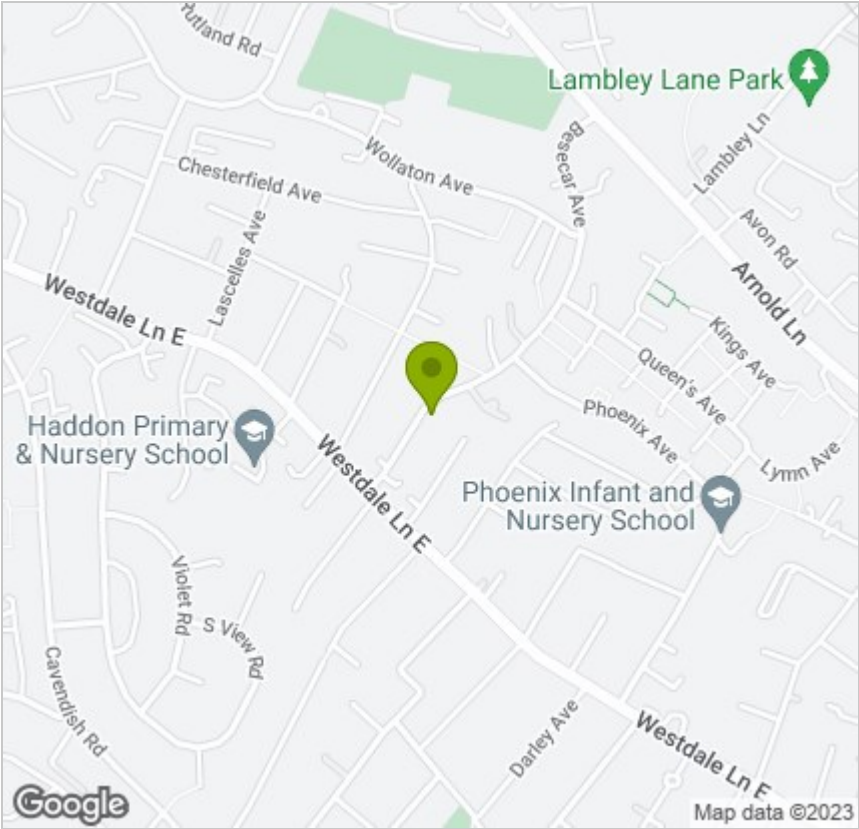


Viewing

Please contact our Burton Joyce Office on 0115 931 2020 if you wish to arrange a viewing appointment for this property or require further information.

These particulars, whilst believed to be accurate are set out as a general outline only for guidance and do not constitute any part of an offer or contract. Intending purchasers should not rely on them as statements of representation of fact, but must satisfy themselves by inspection or otherwise as to their accuracy. No person in this firms employment has the authority to make or give any representation or warranty in respect of the property.

Area Map



Energy Efficiency Graph

